

Ongoing Activities

05/27/19 - 05/31/19

- Main level south terrace hardscapes
- Elevator and Elevator door installation
- North Playground Installation
- Gymnasium Floor Installation
- VCT / Carpet Install 2nd Level
- Epoxy flooring in main level gang restroom
- Metal panel install at elevation I and L
- Curtain wall installation South stair tower
- Cafeteria Ceiling Tiling

Upcoming Activities

- South playground
- 3rd Level VCT/carpet install
- Millwork installation Main West
- Door Installation 2nd Level East
- Light Installation 3rd Level Stair

Financial & Schedule Status

Current GMP = \$27.6M
Bill to Date = \$22,916,635

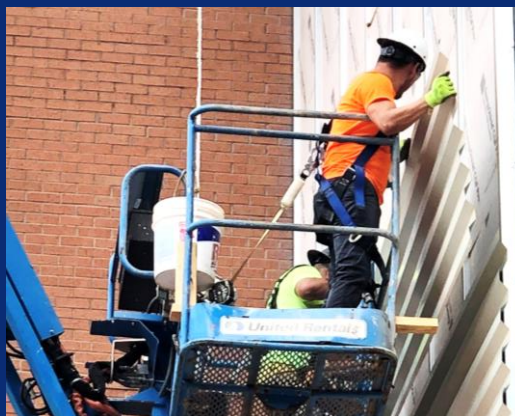
Start Date: July 2, 2018
Current Completion Date:
July 10, 2019

Project Overview



South View from West to East

Safety Sector



Personnel Aerial Lift Fall Protection

JE Dunn's policy requires 100% tie off in all aerial lifts. When working inside of any lift all gates and rails must be closed. Employees shall always stand firmly on the floor of the basket, and shall not sit or climb on the edge of the basket. Only approved lifts can be used for material handling.



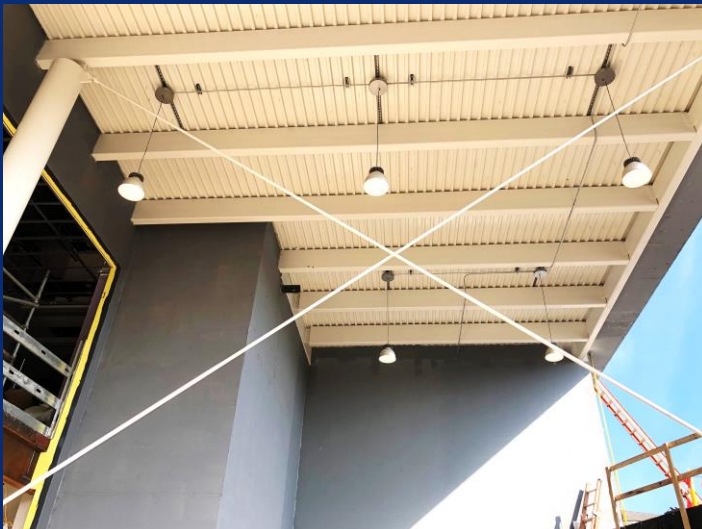
Star Hardscapes at East-Side Terrace



North Playground Installation in Progress



Hardscapes East Side Terrace



Outdoor Lighting East Side Elevated Terrace



East Wing Metal Paneling Install



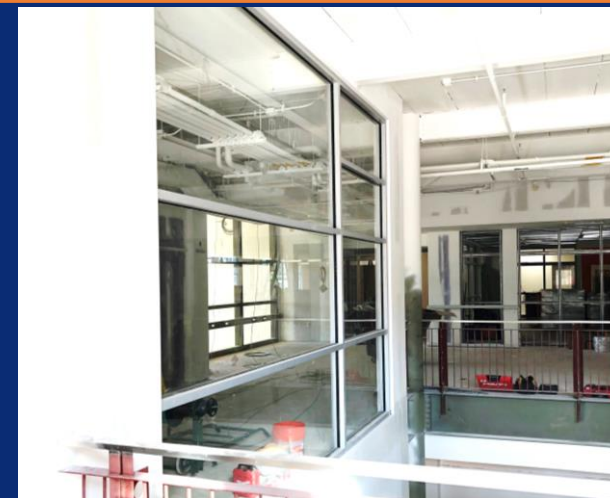
Curtain Wall and Metal Panel Installation South Stair Tower



Elevator Door Installation 2nd Level



Gymnasium Floor Installed



Interior Second Level Lobby
Storefront Installation



VCT installation Main Level West



Carpet Installation Main Level West



Millwork Delivered 3rd Level West